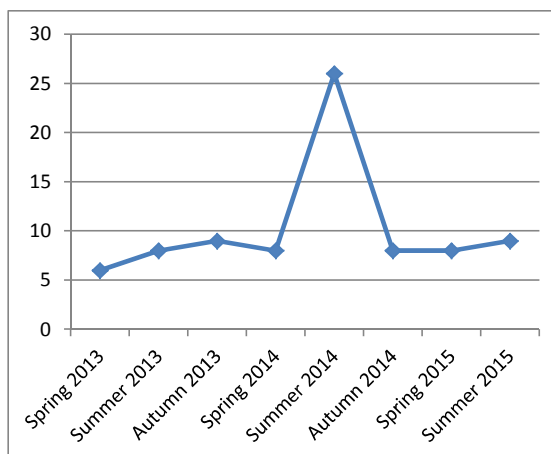


| Dolgellau Language Centre | | |
|--------------------------------------|---------------|---------------------|
| Teacher: 1. Course: 12 weeks | | |
| September 2013 - July 2015 | | |
| <u>Spring Term 2013</u> | <u>Number</u> | <u>Capacity: 8.</u> |
| Ysgol Gynradd Dolgellau | 4 | |
| Ysgol Penybryn, Tywyn | 2 | |
| Total | 6 | |
| <u>Summer Term 2013</u> | | |
| Ysgol Gynradd Dolgellau | 2 | |
| Ysgol Ffridd y Llyn | 3 | |
| Ysgol Penybryn, Tywyn | 1 | |
| Ysgol Beuno Sant | 1 | |
| Ysgol Y Ganllwyd | 1 | |
| Total | 8 | |
| <u>Autumn Term 2013</u> | | |
| Ysgol Penybryn, Tywyn | 3 | |
| Ysgol Craig y Deryn | 3 | |
| Ysgol Gynradd Dolgellau | 2 | |
| Ysgol Beuno Sant | 1 | |
| Total | 9 | |
| <u>Spring Term 2014</u> | | |
| Ysgol Gynradd Dolgellau | 4 | |
| Ysgol Penybryn, Tywyn | 4 | |
| Total | 8 | |
| <u>Summer Term 2014 - After Care</u> | | |
| Ysgol Gynradd Dolgellau | 14 | |
| Ysgol Craig y Deryn | 6 | |
| Ysgol Penybryn, Tywyn | 6 | |
| Total | 26 | |
| <u>Autumn Term 2014</u> | | |
| Ysgol Llanelltyd | 3 | |
| Ysgol Gynradd Dolgellau | 1 | |
| Ysgol Beuno Sant | 1 | |
| Ysgol Dyffryn Dulas | 2 | |
| Ysgol Penybryn, Tywyn | 1 | |
| Total | 8 | |
| <u>Spring Term 2015</u> | | |
| Ysgol Gynradd Dolgellau | 3 | |
| Ysgol Beuno Sant | 1 | |
| Ysgol Bro Tegid | 1 | |
| Ysgol Pennal | 2 | |
| Ysgol Penybryn, Tywyn | 1 | |
| Total | 8 | |



| | | |
|-------------------------|-----------|--|
| | | |
| <u>Summer Term 2015</u> | | |
| Ysgol Craig y Deryn | 1 | |
| Ysgol Penybryn, Tywyn | 4 | |
| Ysgol Ieuan Gwynedd | 2 | |
| Ysgol Bro Tegid | 1 | |
| Ysgol Beuno Sant | 1 | |
| Total | 9 | |
| ALL TOTALS | 82 | |

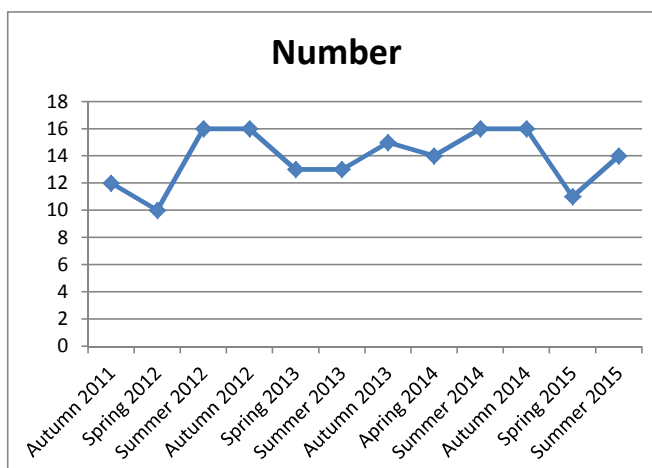
| Maesincla Language Centre | | |
|-------------------------------------|---------------|---------------------------------|
| Teachers: 2 Course: 12 weeks | | |
| September 2011 – Summer 2015 | | |
| <u>Autumn Term 2011</u> | <u>Number</u> | <u>Capacity</u> <u>16/18</u> |
| Llanllechid | 2 | |
| Santes Helen | 3 | |
| Maesincla | 1 | |
| Penybryn | 1 | |
| Llandygai | 1 | |
| Glan Cegin | 2 | |
| Gwaun Gyfni | 1 | |
| Cae Top | 1 | |
| Total | 12 | |

| <u>Spring Term 2012</u> | | |
|-------------------------|-----------|--|
| Santes Helen | 1 | |
| Llanllechid | 1 | |
| Penybryn | 3 | |
| Beddgelert | 1 | |
| Maesincla | 1 | |
| Dolbadarn | 1 | |
| Y Gelli | 1 | |
| Llandygai | 1 | |
| Total | 10 | |

| <u>Summer Term 2012</u> | | |
|-------------------------|-----------|--|
| Cae Top | 4 | |
| Santes Helen | 1 | |
| Maesincla | 2 | |
| Y Faenol | 4 | |
| Ein Harglwyddes | 5 | |
| Total | 16 | |

| <u>Autumn Term 2012</u> | | |
|-------------------------|-----------|--|
| Santes Helen | 2 | |
| Rhiwlas | 1 | |
| Glan Adda | 1 | |
| Penybryn | 1 | |
| Cae Top | 3 | |
| Y Gelli | 2 | |
| Hendre | 1 | |
| Maesincla | 1 | |
| Llanrug | 2 | |
| Bodfeurig | 1 | |
| Tregarth | 1 | |
| Total | 16 | |

| <u>Spring Term 2013</u> | | |
|-------------------------|-----------|--|
| Santes Helen | 1 | |
| Hendre | 2 | |
| Y Faenol | 3 | |
| Llanllechid | 1 | |
| Glan Adda | 1 | |
| Llandygai | 1 | |
| Gwaun Gyfni | 1 | |
| Cae Top | 2 | |
| Maesincla | 1 | |
| Total | 13 | |



| <u>Summer Term 2013</u> | | |
|-------------------------|-----------|--|
| Y Faenol | 5 | |
| Y Garnedd | 1 | |
| Llandwrog | 2 | |
| Rhosgadfan | 3 | |
| Rhostryfan | 2 | |
| Total | 13 | |

| <u>Autumn Term 2013</u> | | |
|-------------------------|-----------|--|
| Llanllechid | 1 | |
| Y Gelli | 1 | |
| Cae Top | 3 | |
| Rhosgadfan | 1 | |
| Maesincla | 1 | |
| Dolbadarn | 1 | |
| Y Garnedd | 1 | |
| Santes Helen | 1 | |
| Penybryn | 1 | |
| Y Faenol | 4 | |
| Total | 15 | |

| <u>Spring Term 2014</u> | | |
|-------------------------|-----------|--|
| Cae Top | 2 | |
| Llandygai | 3 | |
| Maesincla | 2 | |
| Y Gelli | 1 | |
| Y Faenol | 1 | |
| Tregarth | 1 | |
| Rhosgadfan | 1 | |
| Waunfawr | 2 | |
| Hirael | 1 | |
| Total | 14 | |

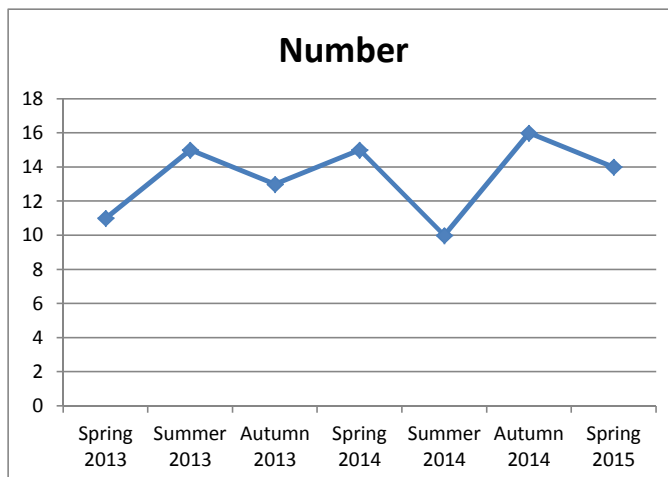
| <u>Summer Term 2014</u> | | |
|-------------------------|-----------|--|
| Y Faenol | 5 | |
| Cwm y Glo | 1 | |
| Dolbadarn | 1 | |
| Hirael | 1 | |
| Ein Harglwyddes | 5 | |
| Bron y Foel, Nebo | 2 | |
| Glan Cegin | 1 | |
| Total | 16 | |

| <u>Autumn Term 2014</u> | | |
|-------------------------|-----------|--|
| Cae Top | 1 | |
| Llanllechid | 1 | |
| Y Gelli | 1 | |
| Maesincla | 7 | |
| Rhosgadfan | 3 | |
| Dolbadarn | 1 | |
| Waunfawr | 1 | |
| Tregarth | 1 | |
| Total | 16 | |

| | | |
|------------------------|-----------|--|
| <u>Spring Term2015</u> | | |
| Y Faenol | 5 | |
| Glan Cegin | 1 | |
| Y Garnedd | 1 | |
| Llandygai | 1 | |
| Yr Hendre | 1 | |
| Penisarwaun | 1 | |
| Penybryn | 1 | |
| Total | 11 | |

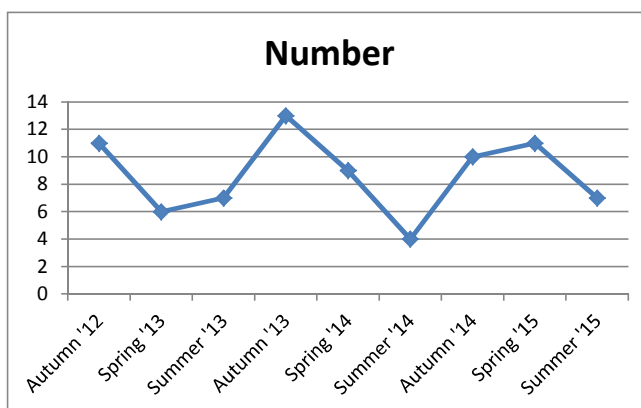
| | | |
|------------------------|------------|--|
| <u>Summer Term2015</u> | | |
| Llanllechid | 1 | |
| Rhosgadfan | 3 | |
| Y Faenol | 3 | |
| Penisarwaun | 1 | |
| Ein Harglwyddes | 5 | |
| Waunfawr | 1 | |
| Total | 14 | |
| ALL TOTALS | 166 | |

| Cefn Coch Language Centre | | |
|--|---------------|----------------------------------|
| Teachers: 2 Course 12 weeks | | |
| Autumn Term 2012 – Spring Term 2015 | | |
| <u>Autumn Term 2012</u> | <u>Number</u> | <u>Capacity:</u> <u>16/18</u> |
| Y Traeth | 4 | |
| Manod | 3 | |
| Llanbedr | 3 | |
| Tan y Castell | 3 | |
| Bro Hedd Wyn | 1 | |
| Dyffryn Ardudwy | 2 | |
| Total | 16 | |
| <u>Spring Term 2013</u> | | |
| Bro Cynfal | 2 | |
| Y Traeth | 1 | |
| Tanygrisiau | 1 | |
| Bro Hedd Wyn | 1 | |
| Talsarnau | 1 | |
| Llanbedr | 2 | |
| Tan y Castell | 1 | |
| Cefn Coch | 2 | |
| Total | 11 | |
| <u>Summer Term 2013</u> | | |
| Tan y Castell | 2 | |
| Cefn Coch | 4 | |
| Y Traeth | 3 | |
| Bro Hedd Wyn | 3 | |
| Edmwnd Prys | 1 | |
| Tanygrisiau | 1 | |
| Dyffryn Ardudwy | 1 | |
| Total | 15 | |
| <u>Autumn Term 2013</u> | | |
| Manod | 1 | |
| Tan y Castell | 2 | |
| Edmwnd Prys | 1 | |
| Cefn Coch | 4 | |
| Dyffryn Ardudwy | 3 | |
| Y Traeth | 1 | |
| Maenofferen | 1 | |
| Total | 13 | |
| <u>Spring Term 2014</u> | | |
| Tanygrisiau | 2 | |
| Cefn Coch | 1 | |
| Dyffryn Ardudwy | 2 | |
| Y Traeth | 4 | |
| Bro Hedd Wyn | 1 | |
| Tan y Castell | 4 | |
| Bro Cynfal | 1 | |
| Total | 15 | |
| <u>Summer Term 2014</u> | | |
| Maenofferen | 7 | |
| Y Traeth | 2 | |
| Tanygrisiau | 1 | |
| Total | 10 | |



| | | |
|-------------------------|------------|--|
| <u>Autumn Term 2014</u> | | |
| Y Traeth | 7 | |
| Bro Hedd Wyn | 2 | |
| Tan y Castell | 3 | |
| Maenofferen | 2 | |
| Bro Cynfal | 1 | |
| Edmwnd Prys | 1 | |
| Total | 16 | |
| <u>Spring Term 2015</u> | | |
| Cefn Coch | 5 | |
| Llanbedr | 1 | |
| Maenofferen | 5 | |
| Tan y Castell | 2 | |
| Y Traeth | 1 | |
| Total | 14 | |
| ALL TOTALS | 110 | |

| Llangybi Language Centre | | |
|------------------------------------|---------------|------------------|
| Teachers: 2 Course 12 weeks | | |
| September 2012 - July 2015 | | |
| <u>Autumn Term 2012</u> | <u>Number</u> | <u>Capacity:</u> |
| | | 16/18 |
| Pentreuchaf | 1 | |
| Talysarn | 1 | |
| Llanbedrog | 3 | |
| Cymerau | 1 | |
| Nefyn | 1 | |
| Borth y Gest | 1 | |
| Bro Lleu | 1 | |
| Eifion Wyn | 2 | |
| Total | 11 | |
| <u>Spring Term 2013</u> | | |
| Eifion Wyn | 2 | |
| Talysarn | 2 | |
| Cymerau | 2 | |
| Total | 6 | |
| <u>Summer 2013</u> | | |
| Talysarn | 1 | |
| Abererch | 1 | |
| Nefyn | 1 | |
| Llanllyfni | 1 | |
| Cymerau | 2 | |
| Bro Lleu | 1 | |
| Total | 7 | |



Botwnnog Catchment Area
 Botwnnog and Ysgol Glan y Môr Catchment Area

| | | |
|-------------------------|-----------|--|
| | | |
| <u>Autumn Term 2013</u> | | |
| Pentreuchaf | 1 | |
| Bro Lleu | 1 | |
| Cymerau | 1 | |
| Aberdaron | 2 | |
| Nefyn | 2 | |
| Llanbedrog | 1 | |
| Sarn Bach | 2 | |
| Garndolbenmaen | 1 | |
| Llangybi | 1 | |
| Llanystumdwy | 1 | |
| Total | 13 | |
| | | |
| <u>Spring Term 2014</u> | | |
| Eifion Wyn | 1 | |
| Trefferthyr | 2 | |
| Llanllyfni | 1 | |
| Nefyn | 1 | |
| Abererch | 1 | |
| Cymerau | 3 | |
| Total | 9 | |
| | | |
| <u>Summer Term 2014</u> | | |
| Edern | 1 | |
| Nebo | 2 | |
| Talysarn | 1 | |
| Total | 4 | |
| | | |
| <u>Autumn Term 2014</u> | | |
| Eifion Wyn | 2 | |
| Pentruachaf | 2 | |
| Bro Lleu | 1 | |
| Nefyn | 1 | |
| Sarn Bach | 1 | |
| Y Gorlan | 1 | |
| Borth y Gest | 2 | |
| Total | 10 | |
| | | |
| <u>Spring Term 2015</u> | | |
| Sarn Bach | 3 | |
| Bala Deulyn | 1 | |
| Trefferthyr | 4 | |
| Foelgron | 2 | |
| Llanystumdwy | 1 | |
| Total | 11 | |
| | | |
| <u>Summer Term 2015</u> | | |
| Llanystumdwy | 2 | |
| Garndolbenmaen | 1 | |
| Abererch | 1 | |
| Abersoch | 1 | |
| Y Gorlan | 2 | |
| Total | 7 | |
| ALL TOTALS | 78 | |